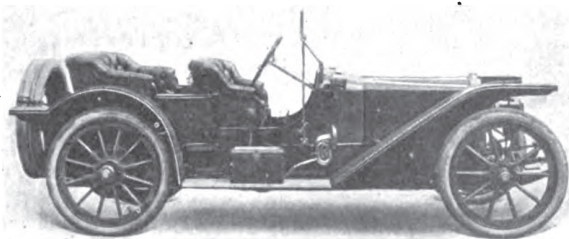
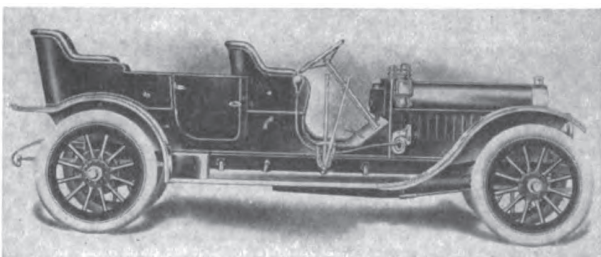


American Simplex Two-Cycle, Four-Cylinder 50-Horsepower



American Traveler Four-Cylinder 50-Horsepower



Atlas Two-Cycle, Four-Cylinder 60-Horsepower



Brush One-Cylinder, 10-Horsepower Model D Coupe



Brush One-Cylinder, 10-Horsepower Model D Runabout

time. An inexperienced driver could operate the Cartcar without injuring the mechanism. The single-lever control avoids the possibility of confusion in operating the car. There is no clutch to slip—no gears to strip—no grease packing—no universal joints—no shaft drive and no bevel gears. Surely a car which is a complete success with these omitted is a good proposition.

On crowded city streets or rough roads any lower speed could be dropped into with ease and there will be no grinding of gears or racing of the motor.

This car is built along the latest approved lines, has style and snap, is roomy and elegantly finished. The equipment is complete and the value is real.

CHADWICK: M. H. Adams—The Perfected Chadwick Great Six to-day presents a strong appeal to the prospective customer because of a mechanical construction original and distinctive and small details producing a complete and harmonious whole, tending to fulfill every function that would prove desirable in an ideal car.

The control of the car is of wonderful flexibility, cars throttling from seventy (or better) miles per hour on direct, to five, without the slightest skipping or irregularity of running in the engine whatever. The carbureter, the engine control, the clutch, the steering gear, the transmission and the entire driving mechanism of the car have been designed with special reference to ease of handling both at high and low speeds.

It is only by the employment of exclusive designs that many of the serious faults in motor-car construction have been overcome. While ease of control in a high-powered motor car is a luxury, ease of riding qualities is even more so, and the use of a peculiar type of spring design and flexible chain drive, with the correct proportioning throughout the entire car, give ease of riding qualities which are unsurpassed, and are of the very utmost importance in any car capable of high speeds.

Durability as a factor has been carefully considered and worked out after many years of experience. The employment of correct engineering design, the use of the highest quality of special materials, the maintaining of an organization whose standard is the very highest quality of workmanship, have produced to-day a car capable of enormous mileage with minimum upkeep. In any motor car the factor of safety to the individual, the assurance against expense from defective design or material are of the utmost importance. In the Chadwick car are not only embodied that quality of material and workmanship that is a positive guarantee of safety, but throughout it contains details of design and construction which are designed solely with reference to protection against accidents.

On this car the entire steering mechanism is to-day the most carefully designed of any car in the world, and the same attitude is carried throughout the entire chassis. As a rule, a car strong in mechanical design and construction does not have body designs of equal attractiveness, but in the Chadwick car the body designs are beautiful, graceful, and each and every detail of body design is correct in every particular and will satisfy the most discriminating purchaser. The Perfected Chadwick Great Six is to-day offered as the production of an organization whose only aim is to build the very best.

CRAWFORD: Geo. D. Crawford, Treasurer—The following qualities should influence a careful buyer of an automobile to select a Crawford: It possesses the power requisite to a satisfactory car, not only sufficient to enable it to carry its load swiftly and smoothly over the ordinary road, but reserve force equal to all road emergencies.

This power is transmitted through gears made of special grade of nickel steel, tested to stand the greatest strain.

The Crawford will commend itself by its practicability and simplicity of design, eliminating complications, fads, and fancies in mechanism, reducing loss of power from friction to a minimum, and by its beauty of outline, perfection in finish, comfort in riding, and further, in that it offers the highest intrinsic value.